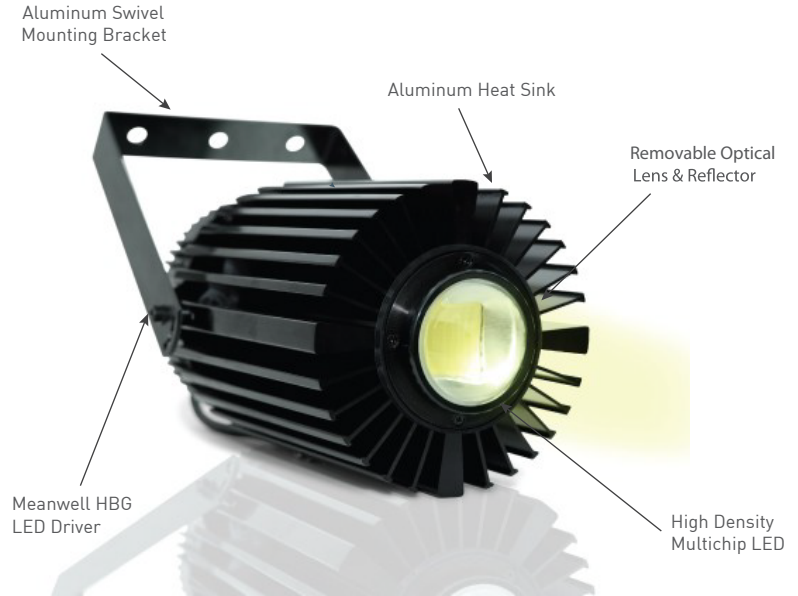


The new Cannon Pro series LED combines all the benefits of LED-based lighting and control in a single, compact light fixture. Now delivering 20% more light output than its predecessor, our new high-density LED multi-chip emitter coupled with polished reflector and glass optical lens produces an intense, sharp beam of light penetrating water more effectively than metal halides. Packaged inside an IP65 rated module with an aluminum heat sink - makes them ideal for harsh aquatic and outdoor environments.

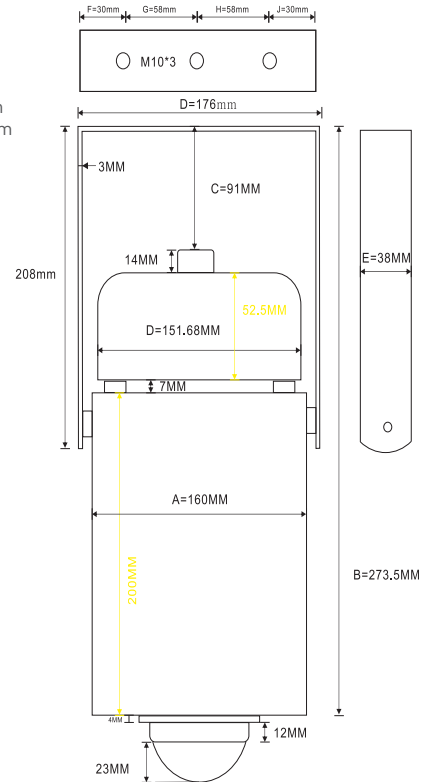
Now available in a multitude of color spectrums with advanced control features, the Cannon Pro opens up new possibilities for commercial aquarium and zoo illumination.



Technical Specifications

Input Voltage: 90-305VAC
 Output Voltage: 36VDC
 Power Consumption: ~ 50w-160w
 Working Temp: -40 to +60C
 Working Humidity: 20-95% RH
 Driver: Meanwell HBG Series
 Protections: Short circuit/ over current / over voltage / over temp
 Built-in PFC Function, high efficiency 93.5%
 Certifications: UL, cUL, CE, SAA
 Dimming Input: 0-10V, PWM and Resistance
 Driver Warranty: 5 years
 RoHS Compliant

Height: 312.5mm
 Diameter: 160mm
 Weight: 3.17 kg
 Total Height w/bracket: 273.5mm
 Material: Aluminum
 Snoot Length (optional): 63.5mm



What's Included:

Each CannonPro LED Pendant is pre-assembled and includes:
 1 - High density multichip LED
 1 - Swivel mounting bracket and mounting hardware
 1 - Meanwell HBG LED driver
 1 - Threaded eye hook with safety harness cable, **silicone snoot**
 3 - Glass optical lenses - 60, 90 & 120 degrees (90 degree pre-installed)
 Complete Instructions

**** Models 6870 & 6878 include integrated controller and wireless remote ****
 (These models are not connectable to an external controller)

Optional Accessories:
 Pipe/strut clamp for 3-4" dia pipe
 0-10V Ramp LED Controller (controls up to 12 Cannons)

Ordering Information:

Model#	Description
6870	Cannon Pro RGBW LED Pendant w/wireless control
6871	Cannon Pro LED Pendant, 10,000K White
6872	Cannon Pro LED Pendant, 5,000K White
6879	Cannon Pro LED Pendant, 460nm Blue
6874	Cannon Pro LED Pendant, Full Spectrum
6878	Cannon Pro LED Pendant, Marine Actinic Spectrum
6875	Cannon Pro Mini LED Pendant, 10,000K White
6876	Cannon Pro Mini LED Pendant, 5,000K White
1677	0-10V Ramp LED Controller
5330	Pipe Strut Clamp, 3-4"
5063	Griplock Cable Hanging Kit, 120"



2.5" Silicone Snoot



Pipe Strut Clamp



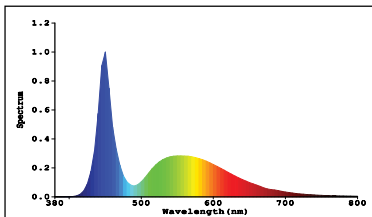
0-10V Ramp Controller

Photometric Specifications

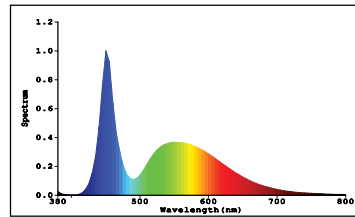
Model#	Description	Flux	CRI	Efficacy	Wattage	L90*	EEL Rating*
6870	Cannon Pro 8,000K White/RGB	8023 lm	81.1	81.2 lm/w	86.5w	>7,500 hr	A
6871	Cannon Pro 10,000K White	11700 lm	86.9	82.7 lm/w	117.5w	>7,500 hr	A+
6872	Cannon Pro 5,000K White	13233 lm	73.9	101.7 lm/w	117.2w	>7,500 hr	A++
6873	Cannon Pro 8,000K White/UVA	9516 lm	81.4	69.7 lm/w	127.7w	>7,500 hr	A+
6874	Cannon Pro Full Spectrum	10216 lm	74.5	75.9 lm/w	134.6w	>7,500 hr	A+
6878	Cannon ProMarine Actinic	7528 lm	80.2	75.3 lm/w	86.7w	>7,500 hr	A+
6879	Cannon Pro 450-460nm Blue	6222 lm	65.1	20.3 lm/w	115.8w	>7,500 hr	A
6875	Cannon Pro Mini, 10,000K White	4364 lm	80.9	80.1 lm/w	54.68w	>7,500 hr	A+
6876	Cannon Pro Mini, 5,000K White	5769 lm	72.8	104.4 lm/w	54.42w	>7,500 hr	A++

* Note: Typical rated lifespan of LED is 50,000 hrs, EEL with 60 degree lens

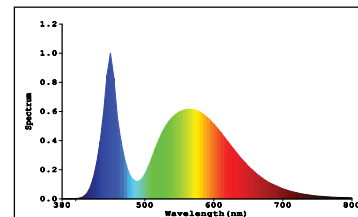
Color Spectra



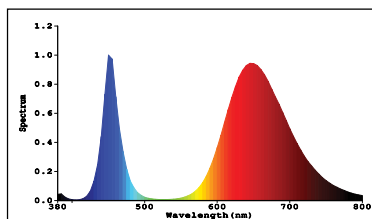
10,000-12,000K White



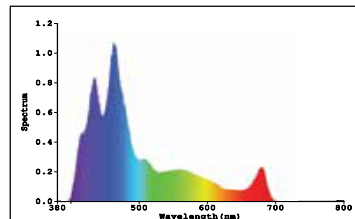
5,000K-5,500K White



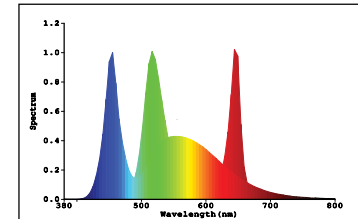
365nm + 8,000K



Full Spectrum



Marine Actinic



8,000K + RGB

Electrical Certification

Fixture Certification:

ROHS

All Cannon PRO LED pendants have the following certifications/approvals:

ETL, cETL, CE, LVD, EMC, EMF, SAA and ERP



IP Rating: LED Light IP65, Cords & Connectors IP67/IP66

Driver Certification: CE, UL Recognized, TUV, PFC, SELV